

CONTROLLING BLACK CUTWORMS

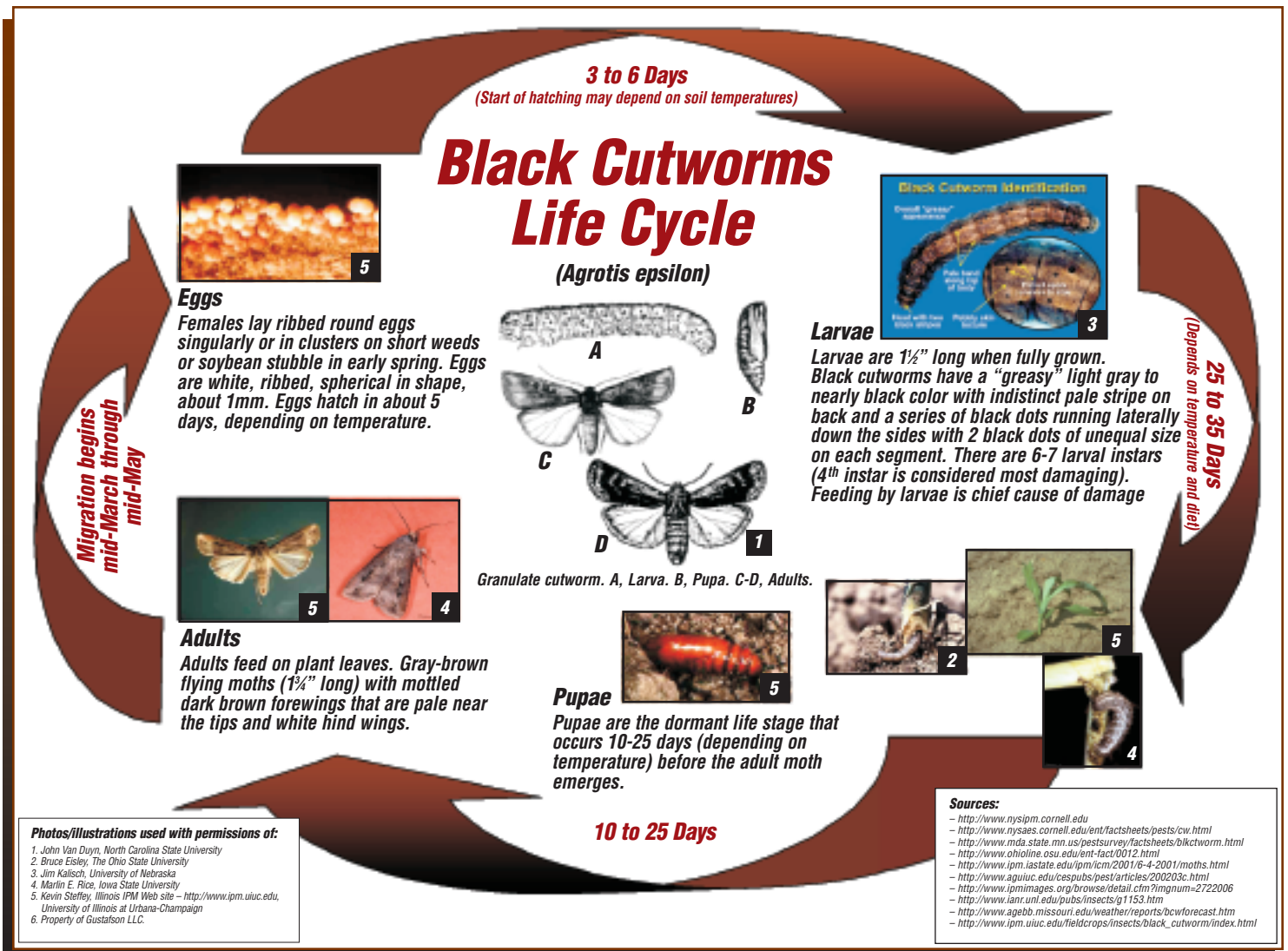


with
PONCHO¹ Insecticide



What is the lifecycle of the black cutworm?

Black cutworm moths fly into corn-growing areas from the Gulf of Mexico. Female moths lay eggs in weedy fields. Cutworms go through six or seven larva stages called instars. Cutting of the corn plant does not occur until the larva has reached the fourth instar. The corn plant may be cut below the soil surface or right at the soil surface. After the sixth or seventh instar stage, the cutworm pupates. Moths then emerge from the soil to lay eggs for the next generation. Normally the first generation is the only generation that causes economic damage.



Black Cutworm Facts

Black cutworms are an early season pest.

There are 3-4 generations/year with approximately 45 days/generation; the 1st generation is of economic importance on corn.

There are 6-7 larval instars; the 4th instar is the most damaging (Instars 1-3 are not capable of cutting plants).

Damage

- A. Above ground - injury is visible and seldom results in the elimination of the plant, since injury occurs above the growing point, and the plant will recover.
- B. Below ground - feeding on small plants in the two- to three-leaf stage often results in total disappearance of the plant. Below-ground feeding on corn plants having four or more leaves often leads to wilted plants or dead whorls, and a tunnel will be found near the base of the plant.

Conditions Favoring Black Cutworm Infestations

- A. Corn following soybeans that had an abundance of winter annual or perennial weeds.
- B. Fields having heavy vegetative cover during early spring.
- C. Fields that are planted into sod or legume pastures.
- D. Fields on bottom land or in low portions of fields.
- E. Fields that are bordered by dense vegetation or pastures.
- F. Tillage practices that allow plant residues or weeds to remain in spring.

Cutworm larvae are nocturnal and will be found under plant debris and clods during the day.

Damage Potential

Larval Instar	Approximate days Left to Feed	Potential number of plants that may be cut		
		1 leaf	2 leaf	4 leaf
4	25	4	3	1
5	21	4	3	1
6	14	4	3	1
7	5	1	1	1

Field Scouting for Black Cutworms

Early detection of economic infestations means that an insecticide can be applied. Careful scouting of cornfields is the most effective means of detecting economic infestations of cutworms. Scouting for cutworms should begin as soon as the corn emerges and continue twice weekly until the plants reach 18 inches high.

In at least five areas of the field, examine 20 consecutive plants. Record the number of plants that are cut, wilted, or showing signs of leaf feeding. While walking through the field, observe the evenness of cutworm infestations. Look for live

cutworms around freshly damaged plants. First, check under clods around the base of plants. Then, dig up an area three inches in radius and three inches deep around the plant. Under dry conditions, cutworms are found lower in the soil. Record the number and average length of the live cutworms.

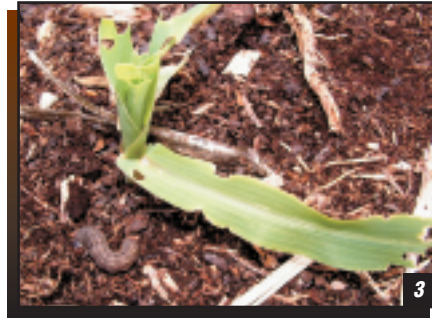
Make stand counts in the field. Counts should be taken in five to ten locations in the field to provide a representative sample of the entire field. At each location count 100 plants and record the number of damaged plants. Determine the percentage of

damaged plants by dividing the number of total cut plants by the number of total plants across locations. These counts are used in making treatment recommendations. High or low stand counts may indicate the need to adjust the economic threshold. More cutworm damage can be sustained without economic loss when plant counts are close to 32,000/ac than when counts are less than 24,000/ac as long as there are no long skips in rows.

When 3% or more of the plants are cut and two or more small cutworms (1" or smaller) per 100 plants are observed, then control action may be warranted. Exceptionally high or low stand counts can be used to adjust the 3% value. If conditions are borderline, scout the field again in 24 to 48 hours or until a final decision is made.



Leaf damage



Aboveground damage



Aboveground tunneling

Poncho Black Cutworm Control*



Protection equal to any competitive product available today.



Provides best black cutworm protection on the market today.

***Feeding will result in: Reduced Larval Feeding
Reduced Larval Activity
Mortality***

**The larvae must feed to be affected.*

References on Cutworms

- Nebraska Insect Field Guide - [Corn Insects - Quick Reference, EC98-1562-B](#) - gives suggestions on control and references on life cycle, scouting, etc.
- Kentucky Corn Insect Field Guide - <http://www.ca.uky.edu/agc/pubs/ent/ent59/ent59.htm> - provides biology, habitat, scouting, and controls.
- Ohio Corn - Early Season Insect Pests - <http://ohioline.osu.edu/ent-fact/0012.html> - this shows the early season pests of corn-go to black cutworm
- Iowa Corn Insect Field Information - <http://www.ipm.iastate.edu/ipm/icm/indices/insectsandmites.html> - go to black cutworm for sampling, biology, scouting, treatments, etc.
- Missouri Corn Black Cutworm Monitoring and Forecasting Program - <http://agebb.missouri.edu/weather/reports/bcwforecast.html> - this describes the lifecycle, damage, monitoring, trapping, and other information on the cutworm on corn.

Poncho Product Performance Questions

1 Contact your seed representative.

2 Confirm the concern.

3 Contact Gustafson representative:

- Contact a Gustafson representative by logging onto www.gustafson.com Go to Find A Rep, then Seed Treatment Chemicals, then select your state or zip code.
- If you prefer, you may call Gustafson at 800/248-6907

Black Cutworm - Rescue Applications

- **When 3% or more of the plants are cut and two or more small cutworms (1" or smaller) per 100 plants are observed, then control action may be warranted*.**

(Larvae 1 inch and greater are normally 5-7th instar larvae and are possibly not controlled with rescue applications.)

**Individual state recommendations may vary slightly. Consult guidelines specific to your state.*

- Consult your state extension service for product recommendations, timing of application and efficacy.



Gustafson LLC • P.O. Box 660065 • Dallas, TX 75266-0065 • (866)442-8246

©, TM, SM Trademark and/or service mark, registered or applied for, of Gustafson LLC. ¹Trademark of Bayer. Always read and follow label directions. ©2003 Gustafson LLC. GC40130 01/04